

Computerised results and timing service

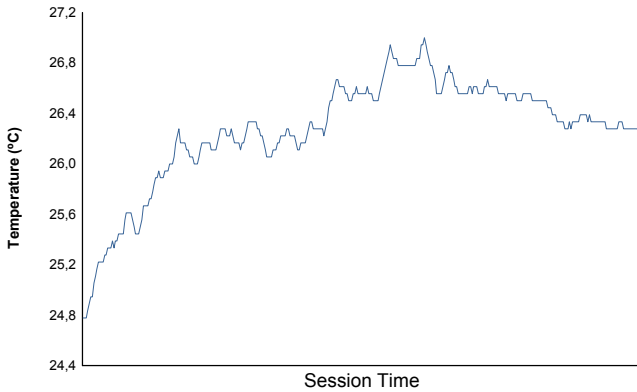
**6 HOURS OF ZHUHAI**

**ILMC**

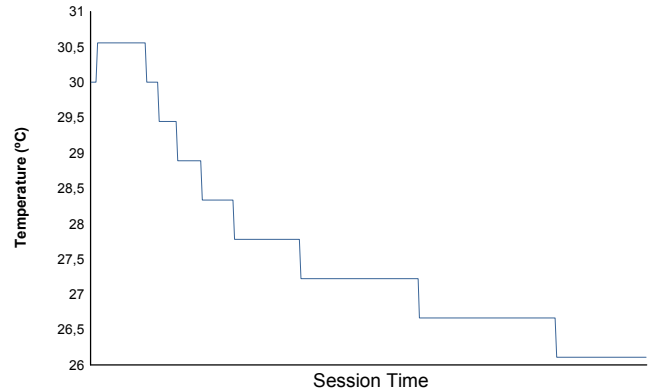
**Race**

**Weather Report**

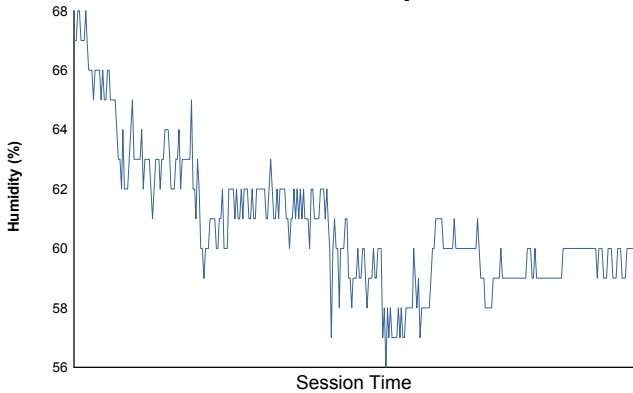
**Air Temperature**



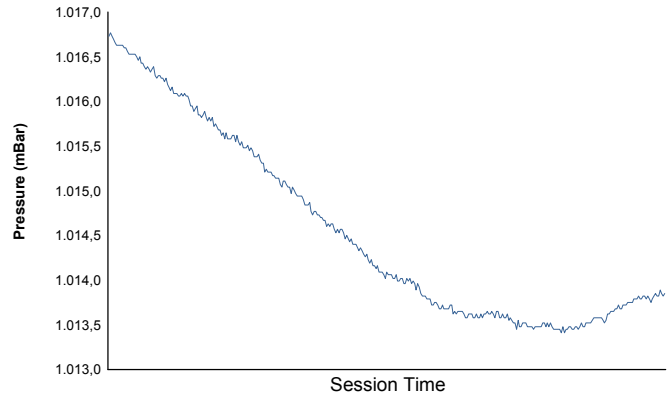
**Track Temperature**



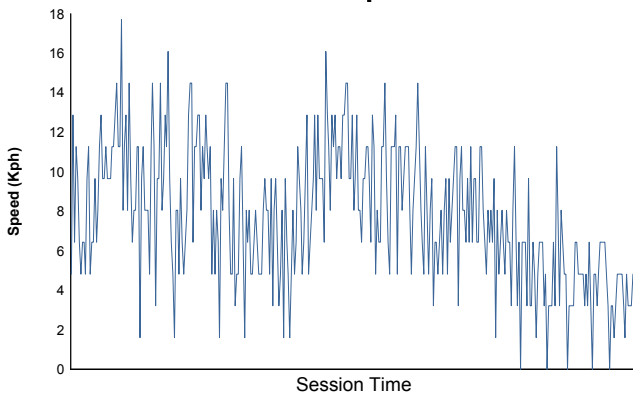
**Humidity**



**Pressure**

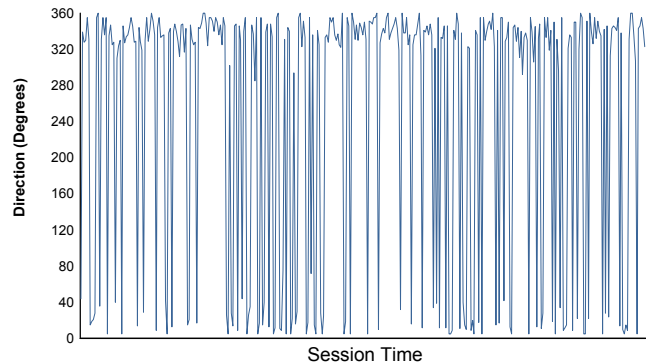


**Wind Speed**



**Wind direction**

North = 0°/360° Est = 90° South = 180° West = 270°



Track Status:

**DRY**