



FIA WORLD ENDURANCE  
CHAMPIONSHIP  
A PARTNERSHIP  

# Driver Performance Review

WEC SEB LMGTE-AM

FIA WORLD ENDURANCE CHAMPIONSHIP

# General Information



The data used for this report are available to everybody via the timing feed.

The different graphs used are :

- LapTime Raising average
- LapTime Box Plot

Some filtering has been applied to keep only green laps, remove Out and In lap but keep enough data to have an accurate analysis.

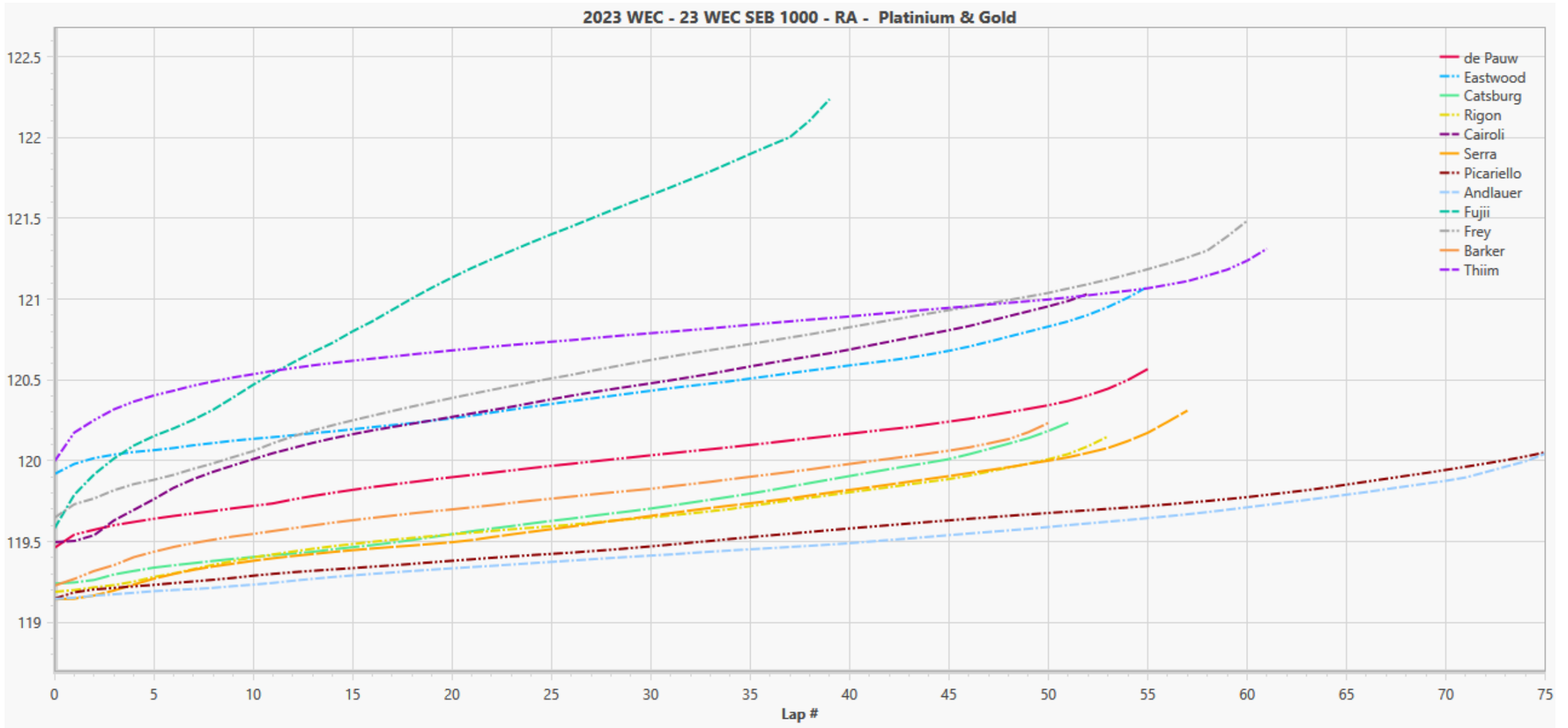
# Entry List

N°	LMGTE Am	NAT	T	CARS	MISC	DRIVER 1	DRIVER 2	DRIVER 3	14		
21	AF CORSE	ITA		M	Ferrari 488 GTE EVO	Stefano Costantini (ITA)	B	Simon Mann (USA)	S	Ulysse de Pauw (BEL)	G
25	ORT BY TF	OMN		M	Aston Martin Vantage AMR	Ahmad Al Harthy (OMN)	B	Michael Dinan (USA)	S	Charlie Eastwood (IRL)	G
33	CORVETTE RACING	USA		M	Chevrolet Corvette C8.R	Ben Keating (USA)	B	Nicolas Varrone (ARG)	S	Nicky Catsburg (NLD)	P
54	AF CORSE	ITA		M	Ferrari 488 GTE EVO	Thomas Flohr (CHE)	B	Francesco Castellacci (ITA)	S	Davide Rigon (ITA)	P
56	PROJECT 1 - AO	DEU		M	Porsche 911 RSR - 19	PJ Hyett (USA)	B	Gunnar Jeannette (USA)	S	Matteo Cairoli (ITA)	P
57	KESSEL RACING	CHE		M	Ferrari 488 GTE EVO	Takeshi Kimura (JPN)	B	Scott Huffaker (USA)	S	Daniel Serra (BRA)	P
60	IRON LYNX	ITA		M	Porsche 911 RSR - 19	Claudio Schiavoni (ITA)	B	Matteo Cressoni (ITA)	S	Alessio Picariello (BEL)	G
77	DEMPSEY-PROTON RACING	DEU		M	Porsche 911 RSR - 19	Christian Ried (DEU)	B	Mikkel Pedersen (DNK)	S	Julien Andlauer (FRA)	G
83	RICHARD MILLE AF CORSE	ITA		M	Ferrari 488 GTE EVO	Luis Perez Companc (ARG)	B	Lilou Wadoux (FRA)	S	Alessio Rovera (ITA)	P
85	IRON DAMES	ITA		M	Porsche 911 RSR - 19	Sarah Bovy (BEL)	B	Michelle Gattling (DNK)	S	Rahel Frey (CHE)	G
86	GR RACING	GBR		M	Porsche 911 RSR - 19	Michael Wainwright (GBR)	B	Riccardo Pera (ITA)	S	Benjamin Barker (GBR)	G
88	PROTON COMPETITION	DEU		M	Porsche 911 RSR - 19	Ryan Hardwick (USA)	B	Zacharie Robichon (CAN)	S	Harry Tincknell (GBR)	P
98	NORTHWEST AMR	CAN		M	Aston Martin Vantage AMR	Paul Dalla Lana (CAN)	B	Axcil Jefferies (GBR)	S	Nicki Thiim (DNK)	P
777	D'STATION RACING	JPN		M	Aston Martin Vantage AMR	Satoshi Hoshino (JPN)	B	Casper Stevenson (GBR)	S	Tomonobu Fujii (JPN)	G

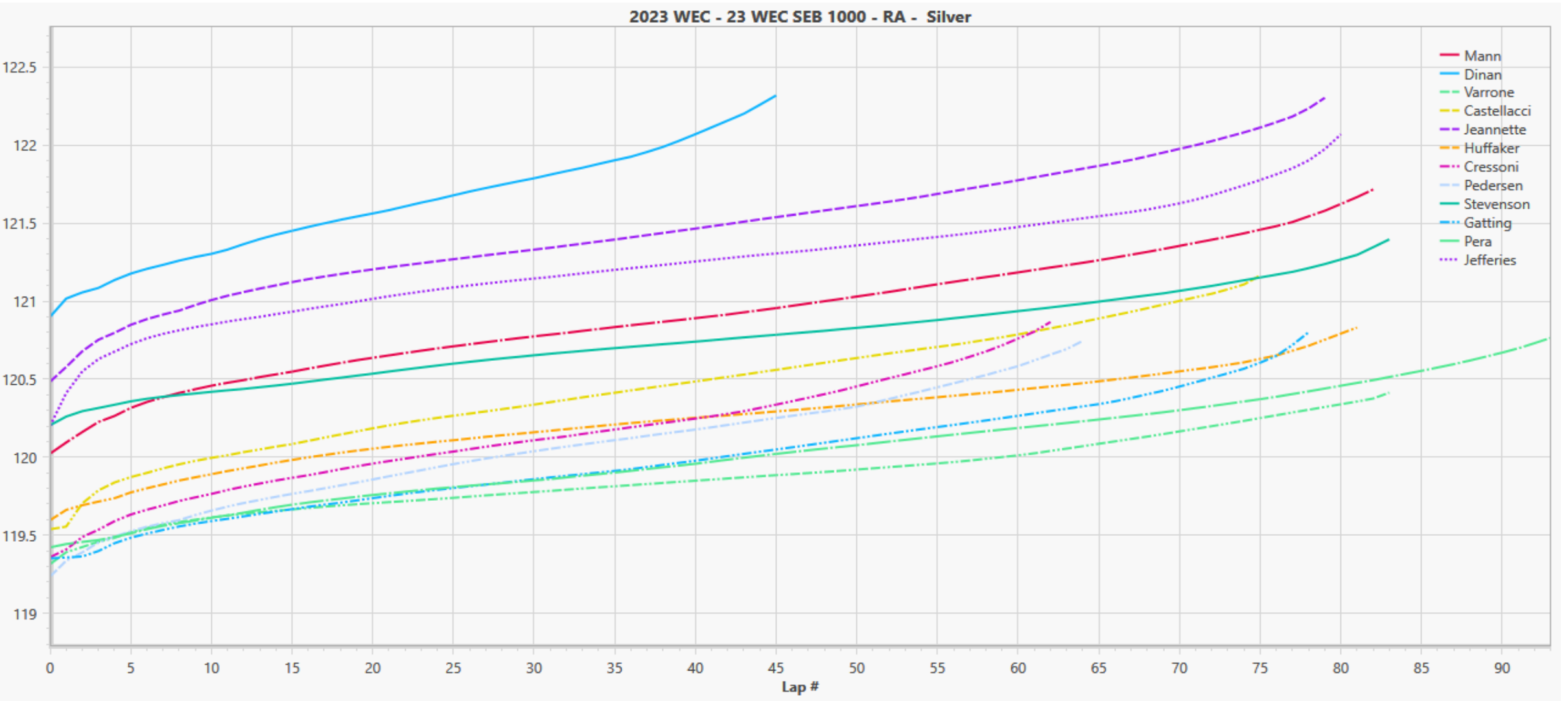
# Stint Overview

	0:25	0:50	1:15	1:40	2:05	2:30	2:55	3:20	3:45	4:10	4:35	5:00	5:25	5:50	6:15	6:40	7:05	7:30	7:55	
<b>57</b>	KIM B: 2:03.590 B20%: 2:03.682	KIM B: 2:01.928 B20%: 2:02.313	KIM B: 2:01.723 B20%: 2:01.816	HUF B: 2:00.135 B20%: 2:00.344	HUF B: 1:59.752 B20%: 2:00.109	SER B: 1:59.151 B20%: 1:59.372	HUF B: 1:59.596 B20%: 1:59.836	SER B: 1:59.143 B20%: 1:59.443												
<b>77</b>	RIE B: 2:04.434 B20%: 2:05.340	RIE B: 2:02.336 B20%: 2:02.889	PED B: 1:59.755 B20%: 2:00.105	PED B: 1:59.919 B20%: 2:00.079	AND B: 1:59.145 B20%: 1:59.351	RIE B: 2:02.279 B20%: 2:02.584	AND B: 1:59.191 B20%: 1:59.371	PED B: 1:59.235 B20%: 1:59.453	AND B: 1:59.161 B20%: 1:59.225											
<b>60</b>	SCH B: 2:06.081 B20%: 2:05.816	SCH B: 2:02.781 B20%: 2:04.047	CRE B: 1:59.678 B20%: 1:59.965	PIC B: 1:59.146 B20%: 1:59.412	SCH B: 2:02.712 B20%: 2:03.227	CRE B: 1:59.359 B20%: 1:59.690	CRE B: 1:59.850 B20%: 1:59.960	PIC B: 1:59.240 B20%: 1:59.276	PIC B: 1:59.443 B20%: 1:59.539											
<b>54</b>	FLO B: 2:04.380 B20%: 2:05.483	FLO B: 2:02.137 B20%: 2:03.195	CAS B: 2:00.038 B20%: 2:00.218	RIG B: 1:59.189 B20%: 1:59.396	FLO B: 2:01.892 B20%: 2:02.317	CAS B: 1:59.538 B20%: 1:59.996	CAS B: 1:59.573 B20%: 2:00.148	RIG B: 1:59.273 B20%: 1:59.446												
<b>86</b>	WAI B: 2:04.087 B20%: 2:05.361	WAI B: 2:04.284 B20%: 2:04.413	PER B: 1:59.623 B20%: 1:59.837	BAR B: 1:59.463 B20%: 1:59.651	PER B: 1:59.843 B20%: 2:00.069	BAR B: 1:59.227 B20%: 1:59.495	WAI B: 2:04.691 B20%: 2:04.741	PER B: 1:59.422 B20%: 1:59.525	PER B: 2:00.904 B20%: 2:01.097											
<b>33</b>	KEA B: 2:01.367 B20%: 2:01.589	KEA B: 1:59.947 B20%: 2:00.610	KEA B: 2:00.124 B20%: 2:00.240	VAR B: 1:59.583 B20%: 1:59.728	VAR B: 1:59.838 B20%: 1:59.899	VAR B: 1:59.315 B20%: 1:59.540	CAT B: 1:59.254 B20%: 1:59.439	CAT B: 1:59.240 B20%: 1:59.393												
<b>85</b>	BOV B: 2:01.633 B20%: 2:01.693	BOV B: 2:00.196 B20%: 2:00.600	BOV B: 2:00.363 B20%: 2:00.437	FRE B: 2:00.653 B20%: 2:00.663	FRE B: 2:00.648 B20%: 2:00.972	GAT B: 1:59.362 B20%: 1:59.754	GAT B: 1:59.352 B20%: 1:59.627	FRE B: 1:59.647 B20%: 1:59.882	GAT B: 1:59.503 B20%: 1:59.726											
<b>21</b>	COS B: 2:02.710 B20%: 2:03.072	COS B: 2:01.846 B20%: 2:02.166	COS B: 2:00.216 B20%: 2:00.630	MAN B: 2:00.573 B20%: 2:00.824	MAN B: 2:00.166 B20%: 2:00.536	MAN B: 2:00.023 B20%: 2:00.462	DEP B: 1:59.869 B20%: 2:00.084	DEP B: 1:59.461 B20%: 1:59.641												
<b>56</b>	HYE B: 2:03.207 B20%: 2:03.628	HYE B: 2:02.170 B20%: 2:02.697	HYE B: 2:01.466 B20%: 2:01.606	CAI B: 2:00.266 B20%: 2:00.685	JEA B: 2:00.674 B20%: 2:01.162	JEA B: 2:01.103 B20%: 2:01.326	CAI B: 1:59.497 B20%: 1:59.762	JEA B: 2:00.484 B20%: 2:00.913												
<b>777</b>	FUJ B: 1:59.580 B20%: 2:00.153	HOS B: 2:01.830 B20%: 2:02.542	STE B: 2:00.205 B20%: 2:00.523	STE B: 2:00.316 B20%: 2:00.426	HOS B: 2:02.629 B20%: 2:03.048	HOS B: 2:01.557 B20%: 2:01.940	STE B: 2:00.884 B20%: 2:00.999	STE B: 2:00.365 B20%: 2:00.530												
<b>25</b>	DIN B: 2:01.825 B20%: 2:02.864	DIN B: 2:01.136 B20%: 2:01.528	ALH B: 2:00.602 B20%: 2:00.770	DIN B: 2:00.900 B20%: 2:01.235	ALH B: 2:01.068 B20%: 2:01.180	ALH B: 2:00.587 B20%: 2:00.711	EAS B: 2:00.089 B20%: 2:00.330	EAS B: 1:59.918 B20%: 2:00.061												
<b>98</b>	DAL B: 2:02.980 B20%: 2:03.258	DAL B: 2:01.775 B20%: 2:01.958	JEF B: 2:00.200 B20%: 2:00.831	DAL B: 2:01.623 B20%: 2:01.856	THI B: 1:59.995 B20%: 2:00.507	JEF B: 2:00.869 B20%: 2:01.082	JEF B: 2:00.623 B20%: 2:01.086	THI B: 2:00.520 B20%: 2:00.539	THI B: 2:00.592 B20%: 2:00.708											
<b>83</b>																				

# RAISING AVERAGE Per Categories | Platinum & Gold

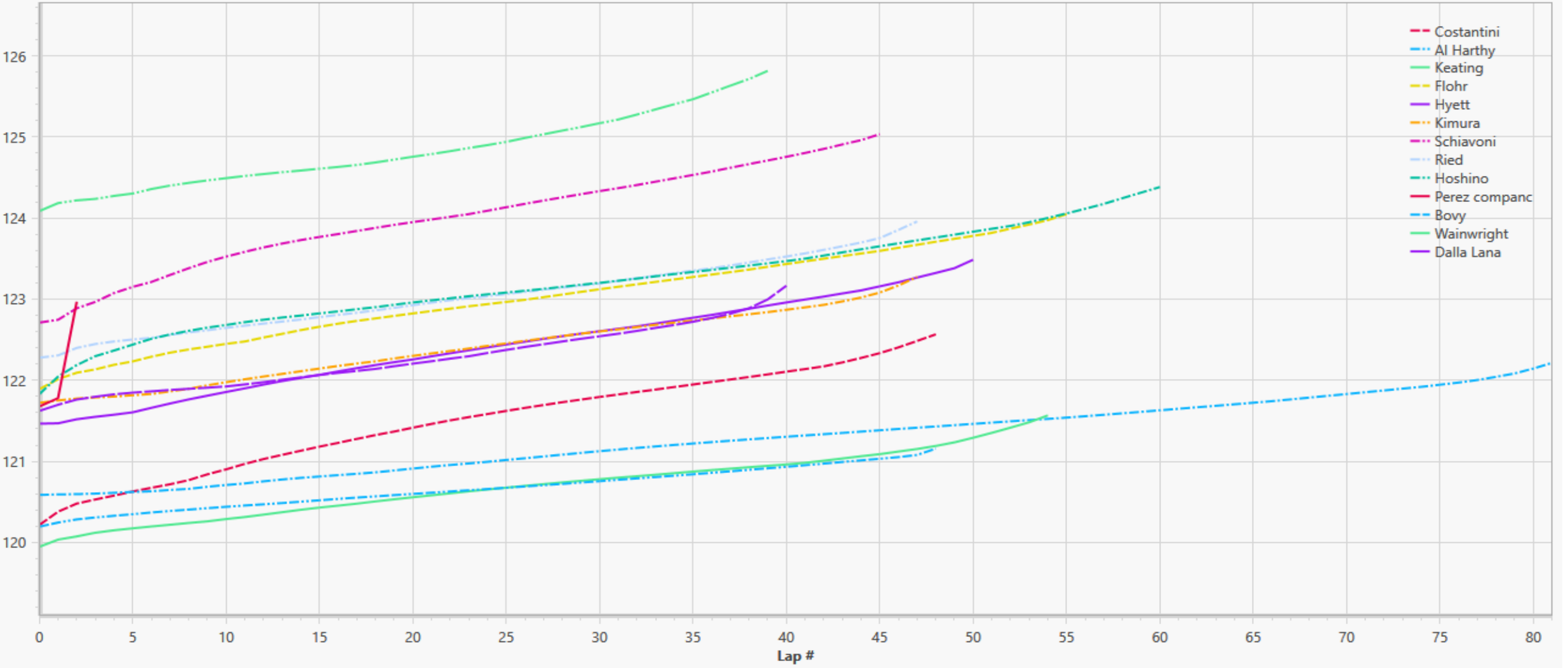


# RAISING AVERAGE Per Categories | Silver



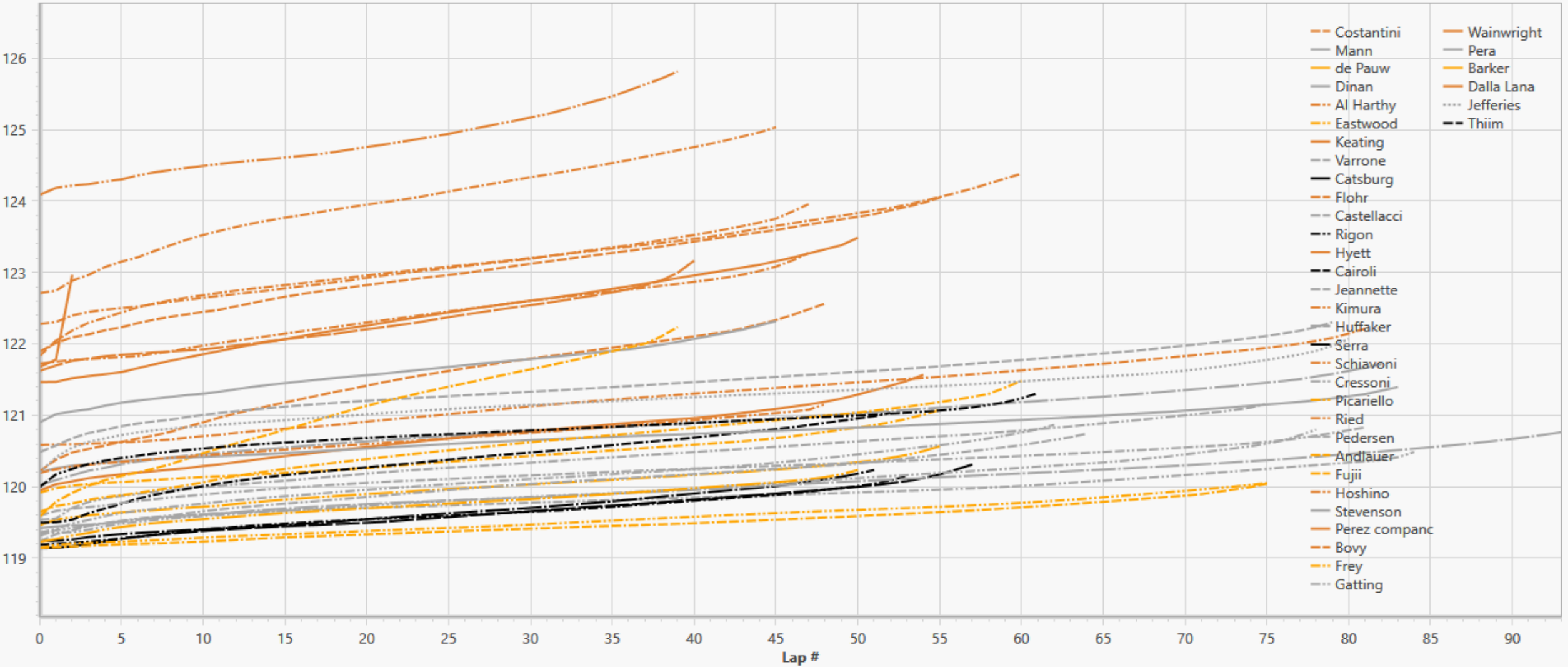
# RAISING AVERAGE Per Categories | Bronze

2023 WEC - 23 WEC SEB 1000 - RA - Bronze



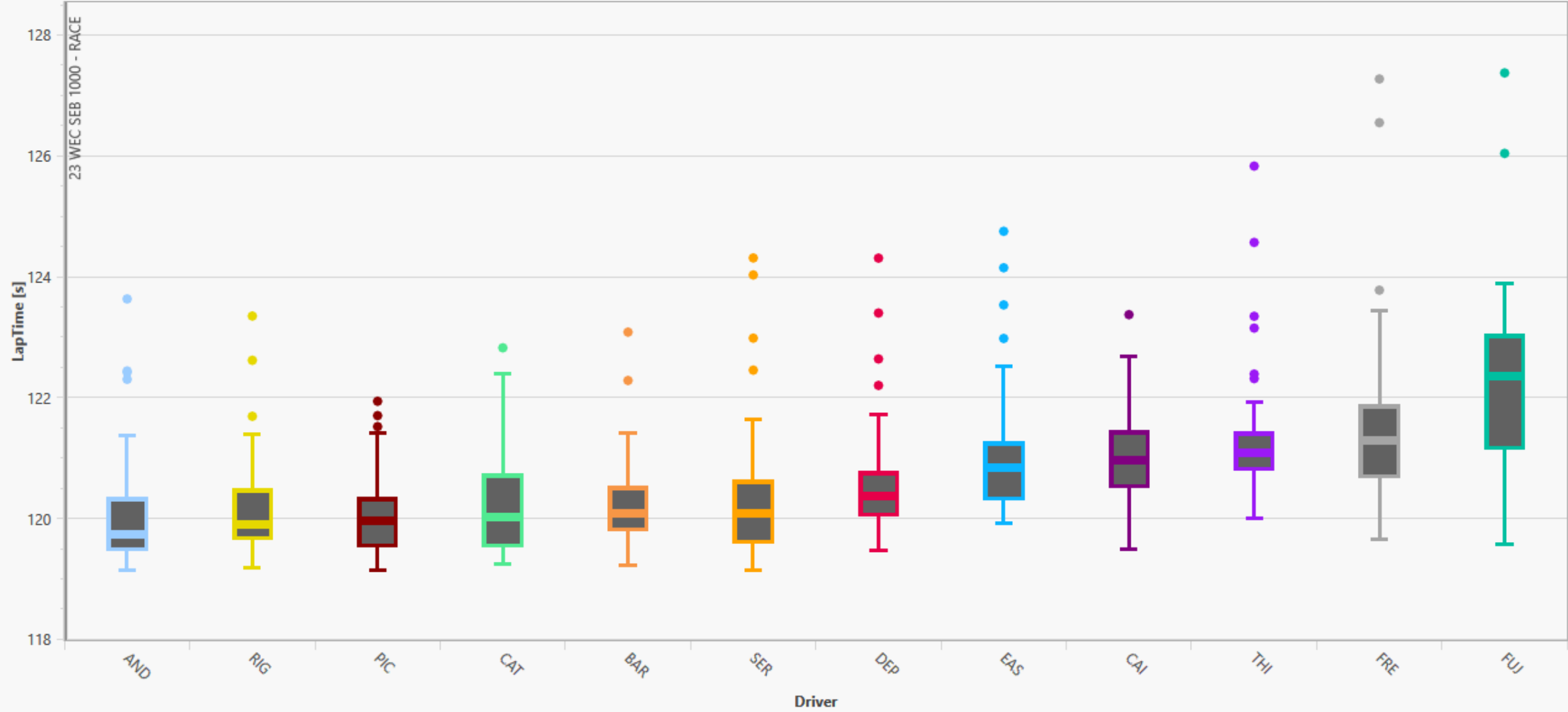
# RAISING AVERAGE ALL | All Categories

2023 WEC - 23 WEC SEB 1000 - RA

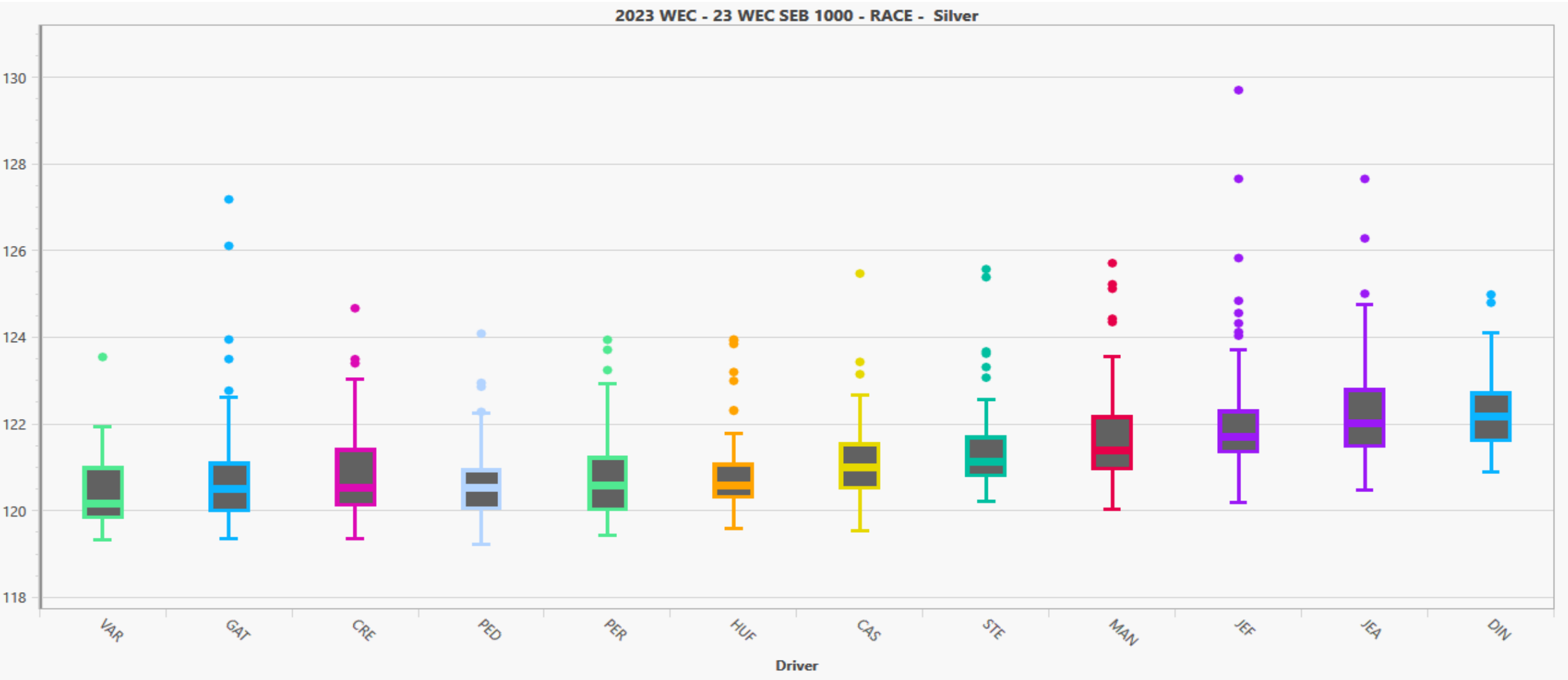


# BoxPlot Per Categories | Platinum & Gold

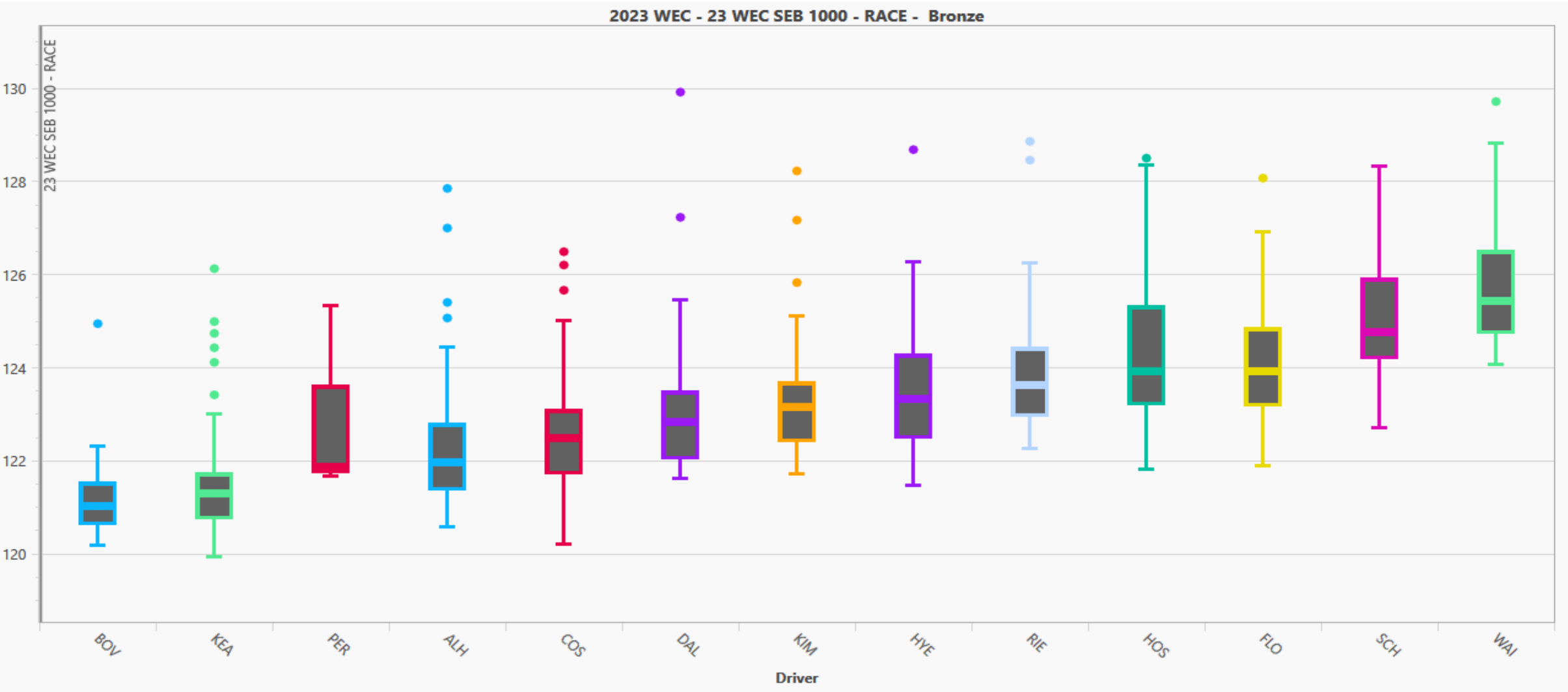
2023 WEC - 23 WEC SEB 1000 - RACE - Platinum & Gold



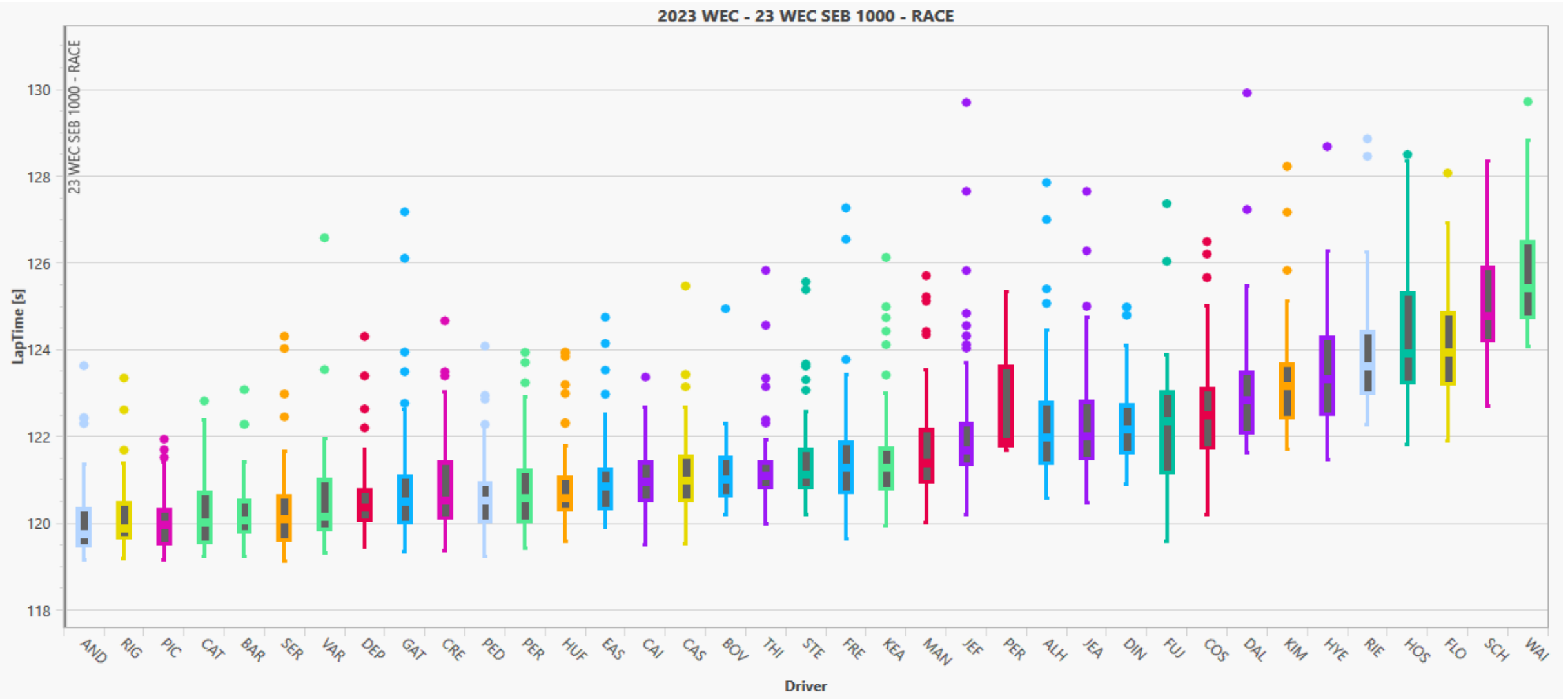
# BoxPlot Per Categories | Silver



# BoxPlot Per Categories | Bronze



# BoxPlot All | All



# Ranking

Drivers	TEAM	Driver Category	NLaps Considered	Ranking Per Category
77 - Julien ANDLAUER	DEMPSEY-PROTON RACING	Gold	60.00	1.00
60 - Alessio PICARIELLO	IRON LYNX	Gold	60.00	2.00
54 - Davide RIGON	AF CORSE	Platinum	43.00	1.00
57 - Daniel SERRA	KESSEL RACING	Platinum	44.00	2.00
33 - Nicky CATSBURG	CORVETTE RACING	Platinum	41.00	3.00
86 - Benjamin BARKER	GR RACING	Gold	40.00	3.00
33 - Nicolas VARRONE	CORVETTE RACING	Silver	64.00	1.00
85 - Michelle GATTING	IRON DAMES	Silver	61.00	2.00
86 - Riccardo PERA	GR RACING	Silver	72.00	3.00
77 - Mikkel PEDERSEN	DEMPSEY-PROTON RACING	Silver	49.00	4.00
60 - Matteo CRESSONI	IRON LYNX	Silver	47.00	5.00
57 - Scott HUFFAKER	KESSEL RACING	Silver	63.00	6.00
25 - Charlie EASTWOOD	ORT BY TF	Gold	43.00	4.00
54 - Francesco CASTELLACCI	AF CORSE	Silver	59.00	7.00
56 - Matteo CAIROLI	PROJECT 1 - AO	Platinum	41.00	4.00
85 - Rahel FREY	IRON DAMES	Gold	46.00	5.00
777 - Casper STEVENSON	D'STATION RACING	Silver	65.00	8.00
85 - Sarah BOVY	IRON DAMES	Bronze	39.00	1.00
33 - Ben KEATING	CORVETTE RACING	Bronze	40.00	2.00
98 - Nicki THIIM	NORTHWEST AMR	Platinum	48.00	5.00
21 - Simon MANN	AF CORSE	Silver	62.00	9.00
98 - Axcil JEFFERIES	NORTHWEST AMR	Silver	59.00	10.00
25 - Ahmad AL HARTHY	ORT BY TF	Bronze	62.00	3.00
56 - Gunnar JEANNETTE	PROJECT 1 - AO	Silver	60.00	11.00
777 - Tomonobu FUJII	D'STATION RACING	Gold	25.00	6.00
25 - Michael DINAN	ORT BY TF	Silver	35.00	12.00
98 - Paul DALLA LANA	NORTHWEST AMR	Bronze	31.00	5.00
57 - Takeshi KIMURA	KESSEL RACING	Bronze	36.00	6.00
56 - PJ HYETT	PROJECT 1 - AO	Bronze	36.00	7.00
54 - Thomas FLOHR	AF CORSE	Bronze	40.00	8.00
77 - Christian RIED	DEMPSEY-PROTON RACING	Bronze	36.00	9.00
777 - Satoshi HOSHINO	D'STATION RACING	Bronze	39.00	10.00
60 - Claudio SCHIAVONI	IRON LYNX	Bronze	32.00	11.00
86 - Michael WAINWRIGHT	GR RACING	Bronze	29.00	12.00