

To: Hypercar LMGT3 LMP2

Date: 02/06/2026

Subject: Fuel handing and storage for the Le Mans Competition

DECISION

Fuel Supply Tank Maximum Height

Contradictory to LMH technical regulation Appendix 7 Art 2/, LMDh Technical regulation Appendix A Art 2/ and 24 LM Supplementary Regulations Appendix 7 Art 6.2, A max fuel supply tank height of 2.65m is permitted.

ROAD TO LE MANS

For the first time this year, Road To Le Mans race will be held on Friday 12th June. 58 cars will take part in a 3-hour race. This will have an impact on 24 Hours of Le Mans competitors, as they will have to:

Disconnect their fuel hose from the fuel pump and the fuel tank level sensor after FP4 and connect a specific hose for fuel line and fuel tank sensor of RTLM installation.

Tokheim will submit your meter reading and connect the Road To Le Mans competitors' fuel rig.

Make available your working area in the pitlane on Friday 12th June from 00:45am to 02:00pm.

A specific hose will be dispatched to the 24 Hours of Le Mans competitors on Tuesday 2nd June in order for 24 Hours of Le Mans competitors to install this hose in their pit lane light structure in anticipation of the RTLM pit lane installation.

Tokheim and RTLM organisers will collect meter reading before and after Road To Le Mans race, so the fuel consumed by Road To Le Mans competitors will be at their expense.

Tokheim and RTLM organisers will also supervise the disconnection and connection to the fuel pump.

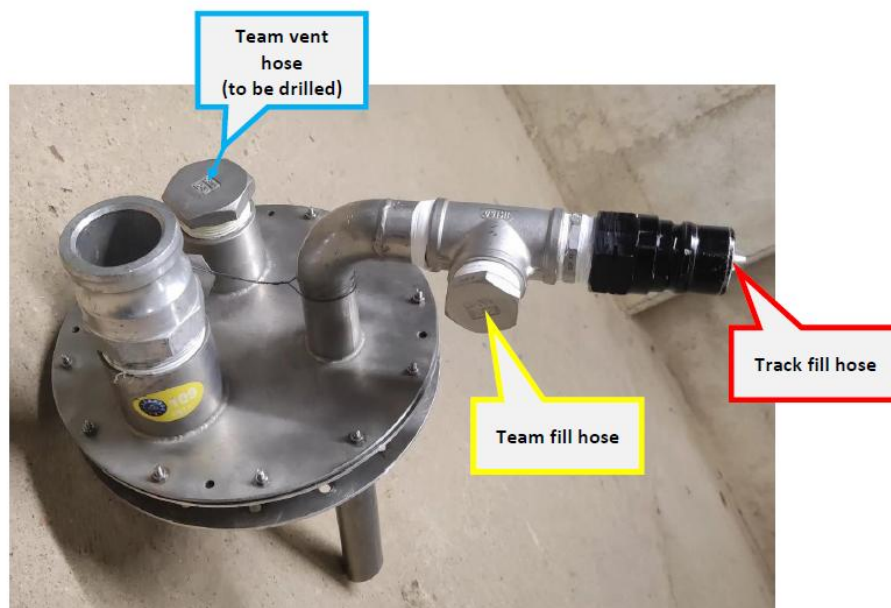
Details regarding fuel handling and filling of the autonomous tank using the temporary tank for the Le Mans competition are detailed below.

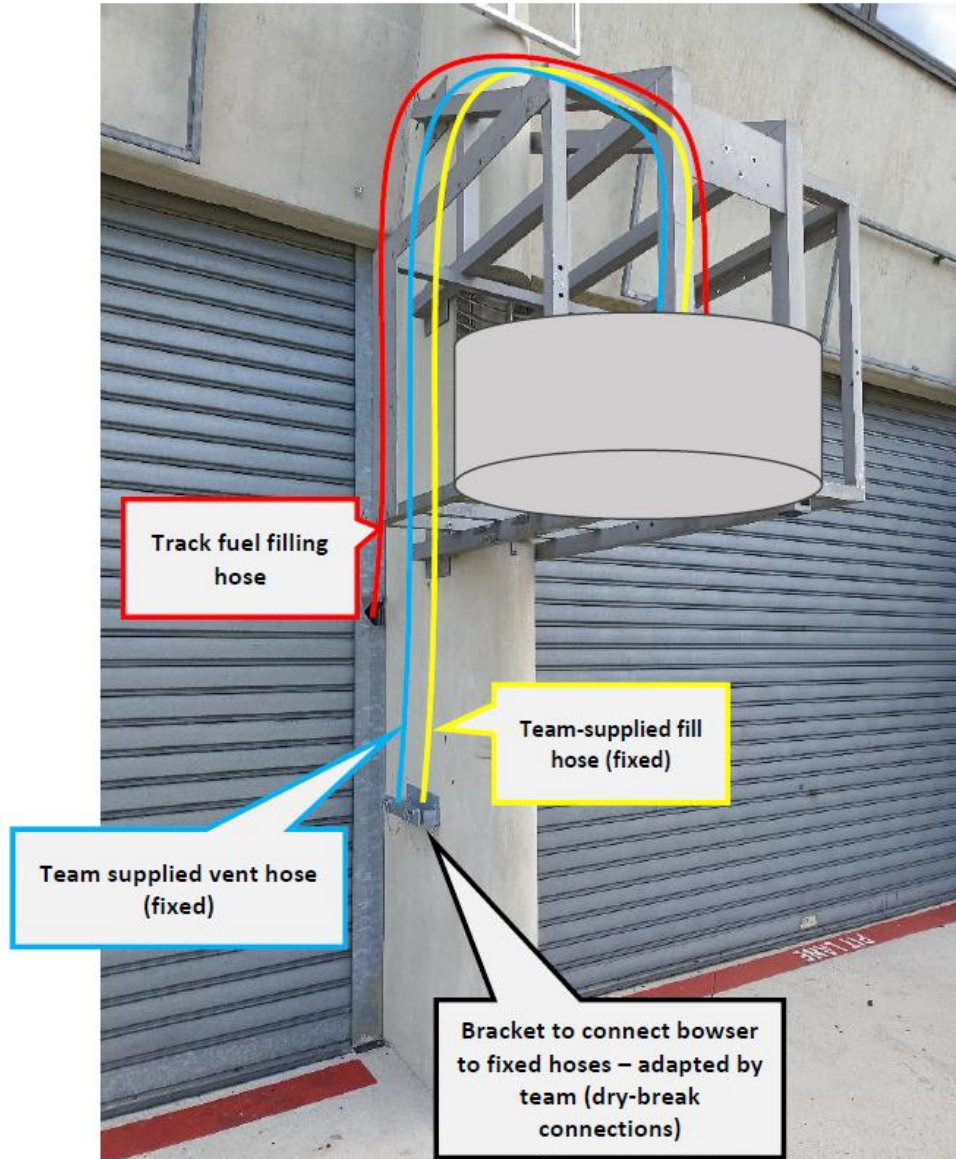
- 1) Each competitor should have by now declared their estimated fuel usage quantity for the warmup and the race to the official fuel supplier (thomas.fritsch@totalenergies.com, cc the technical delegates k.barclay@lemans.org & fizidoro@fia.com). Should amendments to these values be required these must be declared before June 5th 2026, so the correct provisions can be made for each competitor.
- 2) During the entire competition (including the test day):
 - With the exceptions described below in para 3/, filling of the autonomous tank shall only be permitted via the direct supply from the underground dedicated fuel storage. No fuel may be stored in drums in any part of the teams allocated paddock area.
- 3) Exceptions:
 - For teams using garages 47, 56 and 57 during the period in the race between midnight Saturday to 2am Sunday filling the autonomous tank using the temporary tank will be permitted should the underground dedicated fuel storage not be useable. Drums of fuel will be delivered to these garages by TotalEnergies between 23:00 and midnight Saturday.
 - For teams using garages 35 and 36 during the period in the race between midnight Saturday and the end of the race filling the autonomous tank using the temporary tank will be permitted should the underground

dedicated fuel storage not be useable. Drums of fuel will be delivered to these garages by TotalEnergies between 23:00 and midnight Saturday and again between 1:00 and 1:30 Sunday.

In both cases during these times and for these garages only, a maximum of 200L of fuel per car in each garage, stored in drums is permitted. A maximum of 400L of fuel per car maybe stored in a dedicated area (approved by the fire officer) outside on the opposite side of the paddock walkway. It is the responsibility of the competitor to ensure the transfer of fuel from the drums to the temporary tank, using all the appropriated safety measures.

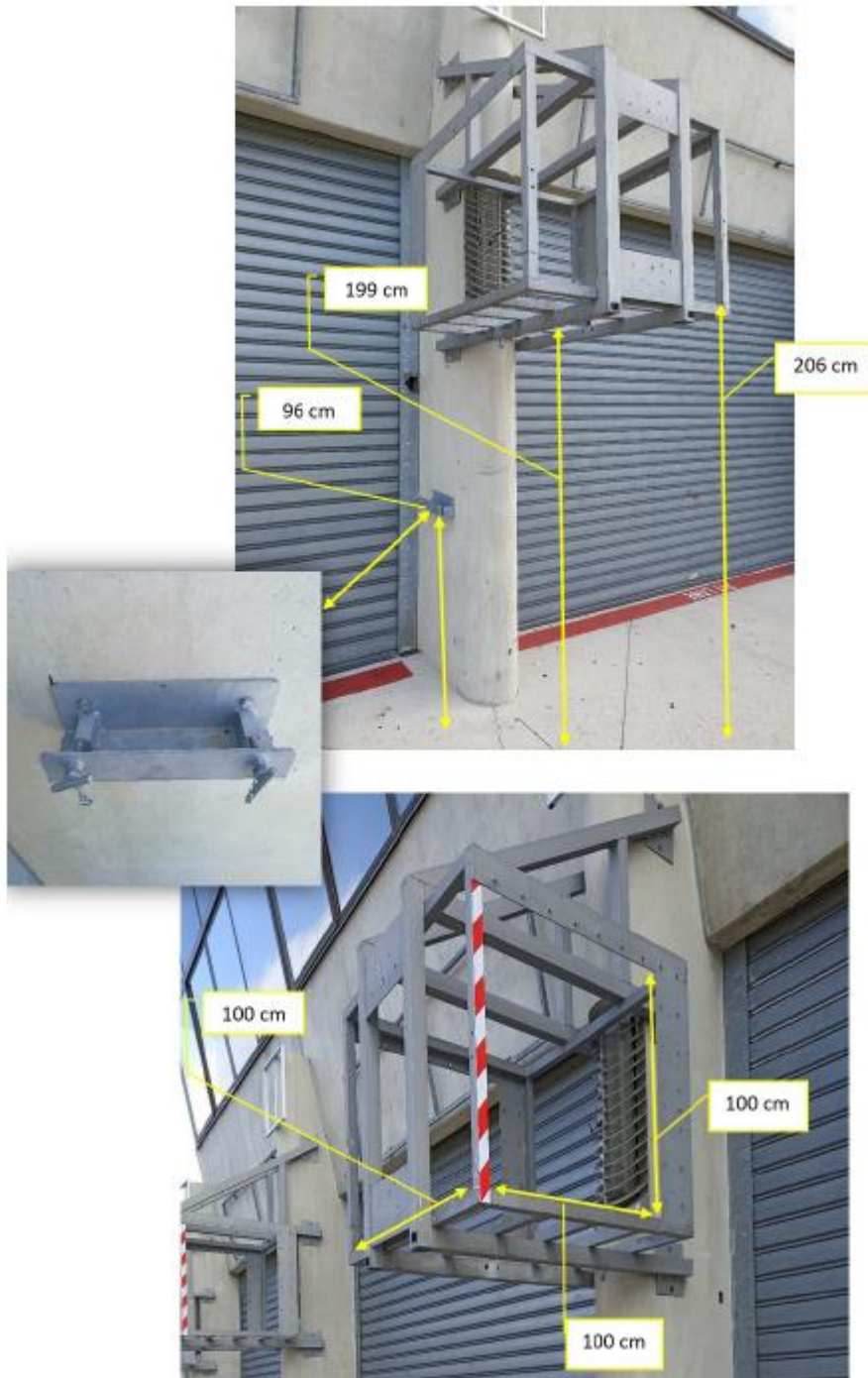
- 4) Refilling of the autonomous tank must be carried out using the autonomous tank closing plate. The plate allows for connection of the temporary tank's filling and venting tubes:







WEC COMMITTEE





Industrie

Agro-Alimentaire

Pharmaceutique

Visserie

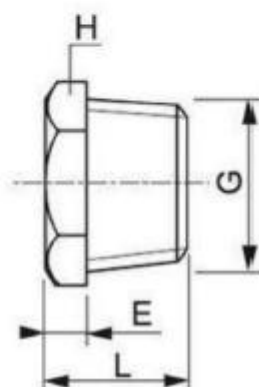
FGinox

www.fginox.fr

Raccords et accessoires filetés ISO → Bouchons

Mâles tête hexagonale 316L usinés

DIN 2986



I.BM_G

DN	G	L (Gaz/NPT)	E	H	Poids (Kg)	Raccordement	Réf.	Raccordement	Réf.
5	1/8"	13	5	10	0,01	Gaz/BSP	BM5G	NPT/BRIGGS	BM5B
8	1/4"	15-16	5	14	0,015	Gaz/BSP	BM8G	NPT/BRIGGS	BM8B
12	3/8"	15-16	5	19	0,03	Gaz/BSP	BM12G	NPT/BRIGGS	BM12B
15	1/2"	20-21	7	23	0,055	Gaz/BSP	BM15G	NPT/BRIGGS	BM15B
20	3/4"	22-23	7	27	0,095	Gaz/BSP	BM20G	NPT/BRIGGS	BM20B
25	1"	23-25	7	36	0,165	Gaz/BSP	BM25G	NPT/BRIGGS	BM25B
32	1"1/4	27-28	8	46	0,31	Gaz/BSP	BM32G	NPT/BRIGGS	BM32B
40	1"1/2	30-32	10	50	0,44	Gaz/BSP	BM40G	NPT/BRIGGS	BM40B
50	2"	34-36	11	60	0,795	Gaz/BSP	BM50G	NPT/BRIGGS	BM50B
65	2"1/2	37	12	78	1,34	Gaz/BSP	BM65G	NPT/BRIGGS	BM65B
80	3"	42	12	92	2,115	Gaz/BSP	BM80G	NPT/BRIGGS	BM80B
100	4"	47	12	118	3,84	Gaz/BSP	BM100G	NPT/BRIGGS	BM100B

Nos raccords unions à joint conique sont usinés dans la barre. Ils ont une PMS de 64 bars jusqu'au DN50 et de 40 bars au-delà de DN50 pour de l'eau à température ambiante

Les cotes d'encombrement sont susceptibles de varier. En cas de cotes impératives, merci de nous consulter.



Industrie

Agro-Alimentaire

Pharmaceutique

Visserie

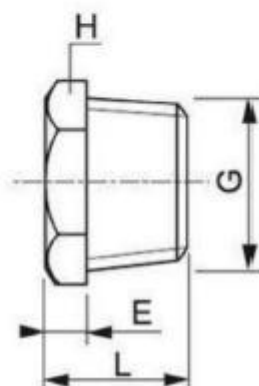
FGinox

www.fginox.fr

Raccords et accessoires filetés ISO → Bouchons

Mâles tête hexagonale 316L usinés

DIN 2986



I.BM_G

DN	G	L (Gaz/NPT)	E	H	Poids (Kg)	Raccordement	Réf.	Raccordement	Réf.
5	1/8"	13	5	10	0,01	Gaz/BSP	BM5G	NPT/BRIGGS	BM5B
8	1/4"	15-16	5	14	0,015	Gaz/BSP	BM8G	NPT/BRIGGS	BM8B
12	3/8"	15-16	5	19	0,03	Gaz/BSP	BM12G	NPT/BRIGGS	BM12B
15	1/2"	20-21	7	23	0,055	Gaz/BSP	BM15G	NPT/BRIGGS	BM15B
20	3/4"	22-23	7	27	0,095	Gaz/BSP	BM20G	NPT/BRIGGS	BM20B
25	1"	23-25	7	36	0,165	Gaz/BSP	BM25G	NPT/BRIGGS	BM25B
32	1"1/4	27-28	8	46	0,31	Gaz/BSP	BM32G	NPT/BRIGGS	BM32B
40	1"1/2	30-32	10	50	0,44	Gaz/BSP	BM40G	NPT/BRIGGS	BM40B
50	2"	34-36	11	60	0,795	Gaz/BSP	BM50G	NPT/BRIGGS	BM50B
65	2"1/2	37	12	78	1,34	Gaz/BSP	BM65G	NPT/BRIGGS	BM65B
80	3"	42	12	92	2,115	Gaz/BSP	BM80G	NPT/BRIGGS	BM80B
100	4"	47	12	118	3,84	Gaz/BSP	BM100G	NPT/BRIGGS	BM100B

Nos raccords unions à joint conique sont usinés dans la barre. Ils ont une PMS de 64 bars jusqu'au DN50 et de 40 bars au-delà de DN50 pour de l'eau à température ambiante

Les cotes d'encombrement sont susceptibles de varier. En cas de cotes impératives, merci de nous consulter.



Industrie

Agro-Alimentaire

Pharmaceutique

Visserie

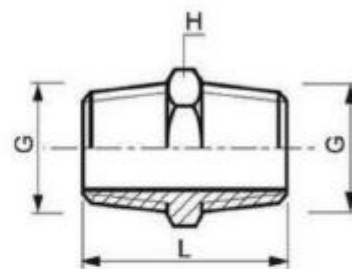
FGinox

www.fginox.fr

Raccords et accessoires filetés ISO → Mamelons

Mamelons hexagonaux 316

*2 plats de serrage



I.MH_G

DN	G	L	H	Poids (Kg)	Raccordement	Réf.	Raccordement	Réf.
5	1/8"	25	12	0,007	Gaz/BSP	MH5G	NPT/BRIGGS	MH5B
8	1/4"	33	15	0,016	Gaz/BSP	MH8G	NPT/BRIGGS	MH8B
12	3/8"	35	20	0,022	Gaz/BSP	MH12G	NPT/BRIGGS	MH12B
15	1/2"	42	23	0,041	Gaz/BSP	MH15G	NPT/BRIGGS	MH15B
20	3/4"	48	29	0,062	Gaz/BSP	MH20G	NPT/BRIGGS	MH20B
25	1"	52	36	0,099	Gaz/BSP	MH25G	NPT/BRIGGS	MH25B
32	1"1/4	58	46	0,156	Gaz/BSP	MH32G	NPT/BRIGGS	MH32B
40	1"1/2	58	52	0,203	Gaz/BSP	MH40G	NPT/BRIGGS	MH40B
50	2"	64	63	0,350	Gaz/BSP	MH50G	NPT/BRIGGS	MH50B
65	2"1/2	74	80	0,484	Gaz/BSP	MH65G		
80	3"	86	95	0,677	Gaz/BSP	MH80G		

Nos raccords unions à joint conique sont usinés dans la barre. Ils ont une PMS de 64 bars jusqu'au DN50 et de 40 bars au-delà de DN50 pour de l'eau à température ambiante

Les cotes d'encombrement sont susceptibles de varier. En cas de cotes impératives, merci de nous consulter.



- 6) The installation of this plate and all hoses must be approved by the scrutineers before the beginning of the Test Day.
- 7) Pumping from supply drums, transfer to autonomous tank and filling must be carried out with the temporary tank described in the applicable Technical Regulations.

No handling of fuel is permitted in the pit except with this temporary tank.